



## **MISSION 02: WELCOME TO SUSE – SUPPORTING DOCUMENTATION**

OPERATION PIERCING FURY CAMPAIGN



# OBJECTIVES

## **Campaign Objectives Include:**

- Bringing order to the region.
- Eliminate the terrorist nexus inside of Georgia.
- “Capture-or-Kill” High Value Targets and / or War Criminals in the region.

## **Mission Two - “Welcome to Suse” Objectives:**

- Provide CAS and CASEVAC support for Ground Forces (Voodoo-23 & 24).
- Assist in Capturing or Killing Tango-6 (HVT).
- Complete tasks as directed by the Operational Commander in the region (Whiplash-1).



# AFTER ACTIONS REPORT – MISSION 01 – THE AO

## AFTER ACTIONS REPORT (AAR)

### Mission One - “The AO” Objectives:

- Follow your established flight path around the Area of Responsibility.
- Provide CAS to Ground Forces in the region if requested.
- Complete tasks as directed by the Operational Commander in the region (Whiplash-1).

COMPLETED

15 June 2015 - Hawg Flight successfully completed their orientation flight in the Area of Responsibility. Hawg Flight assisted Rodeo 4-5 (SF, Delta Force, Detachment Alpha Team Lead) in destroying a suspected IED factory compound at LM 19797 59710. Follow-up investigation confirmed the presence of IED's and enemy insurgents were present at the target building. Col. Stevens (Whiplash-1) has certified Hawg Flight ready for combat, and assigned them for direct support of Joint Special Operations Command (JSOC) elements in the region. No further action or recommendations required. ///END OF REPORT///





# FLIGHT PATH – WEATHER INFORMATION

Date: July 2, 2015  
Time: 1830 Hours Local  
Temp: 26° C / 78° F  
Weather: Partly Cloudy  
Wind: Light



## Clouds and Atmosphere

Base: 600 meters

Thickness: 770

Light to Medium Density

QNH: 755

## Wind

@10m - 5m/s - Direction: 160

@2000m - 8m/s - Direction: 243

@8000m - 7m/s - Direction: 71

## Turbulence

12 m/s

## NOTAM

None at this time



WP1 & WP2 ARE POSITIONED DIRECTLY @  
GROUND LEVEL FOR EASY REFERENCE.  
MAINTAIN 8,000 FT ALONG FLIGHT PATH



"Welcome to Suse"

# LOADOUTS

## LOADOUTS

### "HAWG" FLIGHT - A-10C

Fuel 90%, Weight 99%

Chaff / Flare 240 / 120

#### LOAD OUT:

100% Gun Ammo

2x: GBU-38

84x: M151 (HE Rocket)

7x: M156 (WP Rocket)

2x: AIM-9M

1x: AN/AAQ-28 LITENING

1x: ALQ-131

GBU-38 x 2

AIM-9 x 2

M156 WP ROCKETS x 7

M151 HE ROCKETS x 84

Hawg 1, 2, 3, & 4





# PLAN OF ATTACK

## "Capture or Kill"

Area of Responsibility (AOR)

30 km Zone Radius from FOB Suse  
16.2 nm

FOB Suse

Kutasi AB

Target AO

Tsutshvati

17 km  
9.2 nm

17 km  
9.2 nm



Entire Area inside of the AOR is extremely hostile!

RED SHADED AREA INDICATES TRIBAL CONTROLLED REGION

Once Hawg, Reaper, and Hellraiser Flights RV FOB Suse AO, Pontiac I-1 will make contact for dustoff

Pontiac I-1 & I-2 Standing by at FOB Suse

FOB Suse



SITREP will be given while all flights are in the air enroute to FOB Suse

**Objective 1**

Hawg, Reaper, & Hellraiser Flights Escort Pontiac I-1 & I-2 to Target AO LZ

**Objective 2**

Hawg, Reaper, & Hellraiser Flights Provide CAS to Voodoo teams as directed

"Voodoo-23"



"Pontiac 1-1 / 1-2"

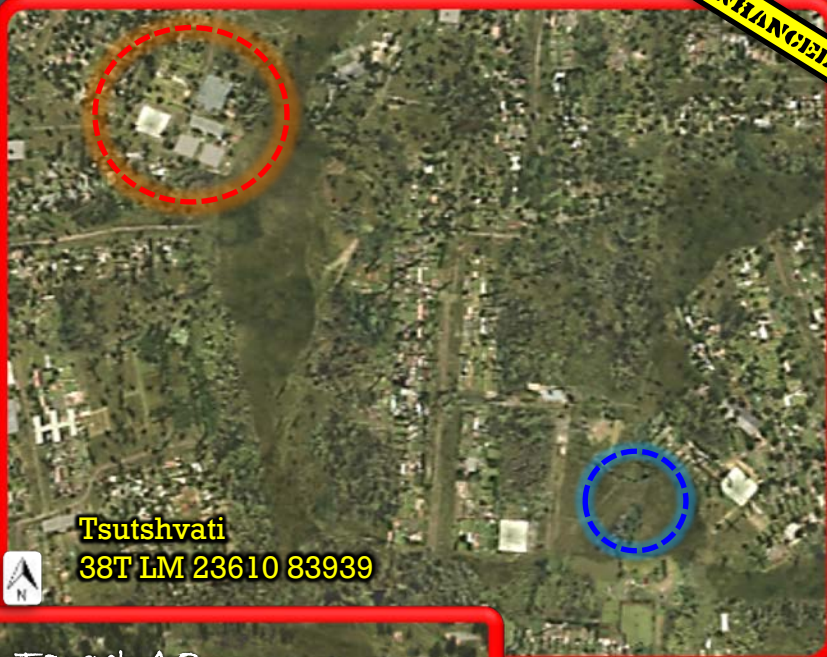




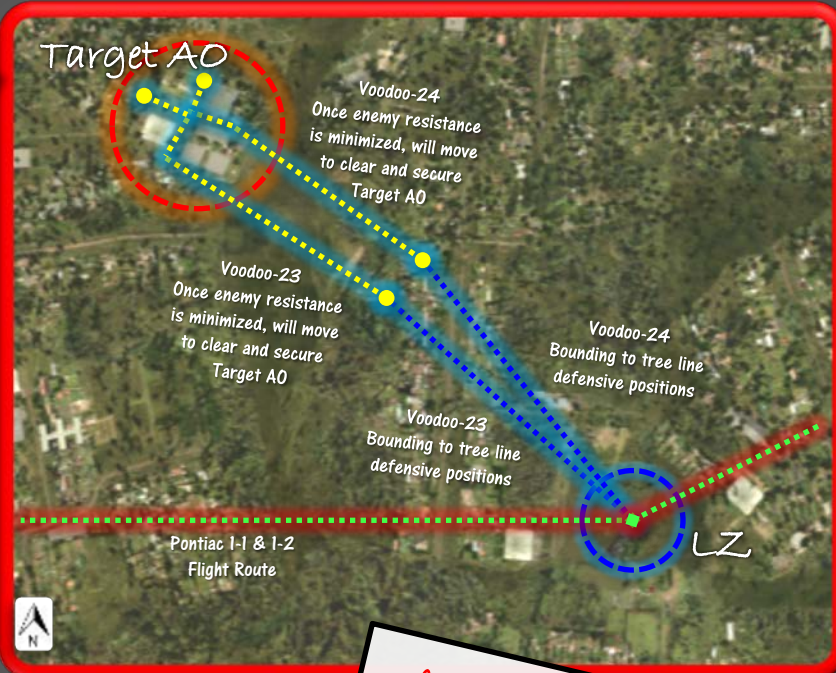


# PRIMARY TARGET

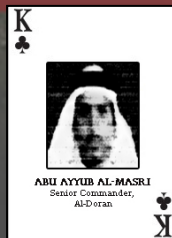
**ENHANCED**



**Tsutshvati**  
38T LM 23610 83939



Target AO



CODENAME: TANGO-6  
ABU AYYUB AL-MASRI  
SENIOR COMMANDER OF AL-DORAN  
BORN 1968  
EGYPT

**Capture or Kill Order**  
Authorization to Capture or Kill Tango-6





# REGIONAL MAP

"The AO"

Area of  
Responsibility  
(AOR)

30 km Zone Radius  
from FOB Suse  
16.2 nm

FOB Suse

Kutaisi AB

17 km  
9.2 nm

SAM Threat in the  
region is extremely  
low to non-existent

Entire Area inside of the  
AOR is extremely hostile!

RED SHADED AREA  
INDICATES TRIBAL  
CONTROLLED REGION

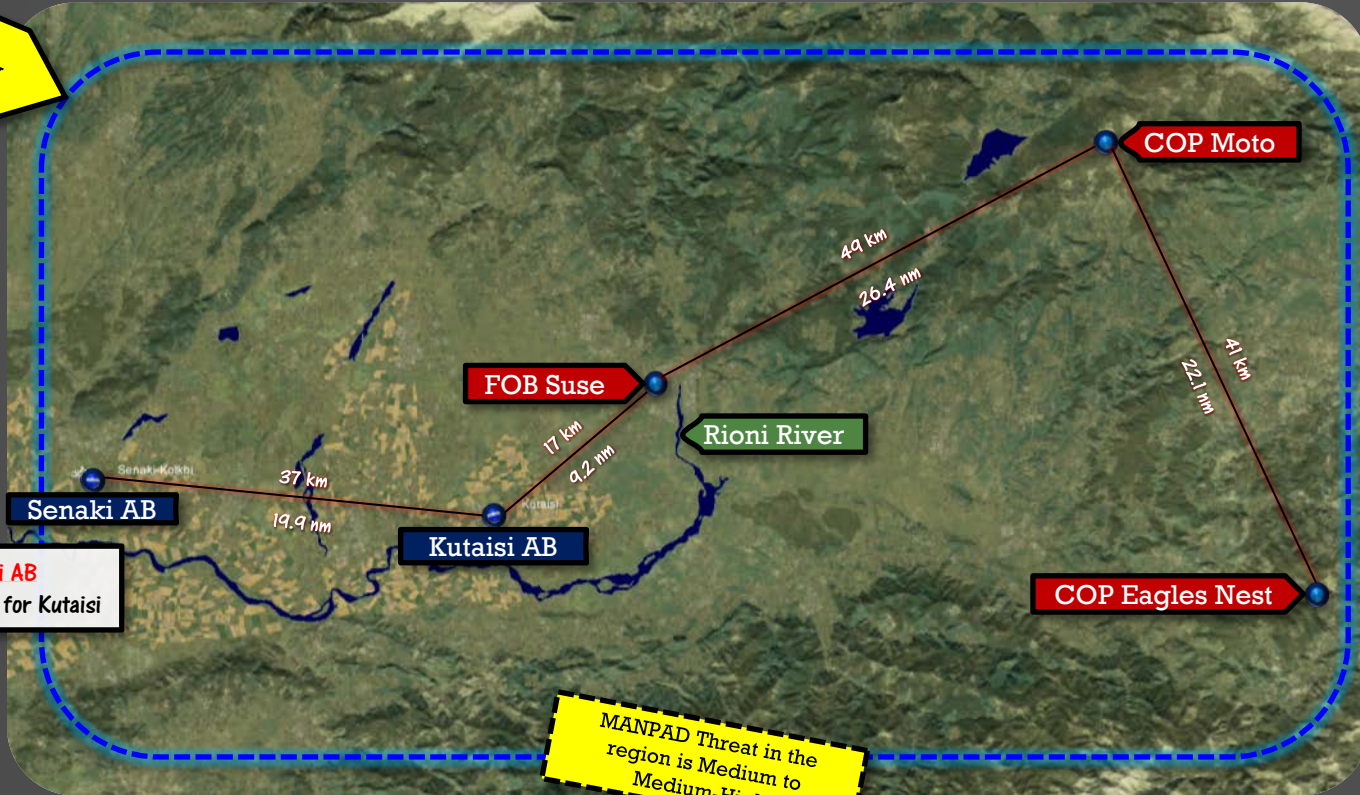






# REGIONAL MAP (AOR)

Area of  
Responsibility  
(AOR)



**Senaki AB**  
Alternate AB for Kutaisi

MANPAD Threat in the  
region is Medium to  
Medium-High

